

PRS/S ECO LED

ECO series luminaires



Description

Surface-mounted LED-based luminaire for offices and classrooms with uniform shadowless diffuser illumination and high luminous efficacy (105 lm/W).

Installation

Mounted on the ceiling surface.

Design

White powder-painted weld sheet steel housing. Control gear is installed inside the housing.

Optical part

ECO LED module provides uniform shadowless illumination of luminaire diffuser. Diffuser made of transparent polymeric material with prismatic structure in metal frame. LED type: SMD.

Usage

Cultural and entertainment facilities

Educational institutions

HoReCa / hotels / restaurants / cafes

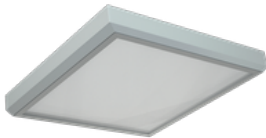
Housing and public utilities

Mall

Medical institutions

Office and administrative premises

Transport hubs (railway stations, airports)



Models list

Title	Luminous flux	Power Capability	lm/W	Length	Height	Width	Weight	Article no.
PRS/S ECO LED 600 4000K /E/	4000.00 lm	32.00 W	125.00	625 mm	82 mm	610 mm	5.00 kg	1997038210
PRS/S ECO LED 600 5000K /E/	4000.00 lm	32.00 W	125.00	625 mm	82 mm	610 mm	5.00 kg	1997020270
PRS/S ECO LED 1200 4000K /E/	3700.00 lm	33.00 W	112.00	1225 mm	90 mm	310 mm	5.00 kg	1997014190
PRS/S ECO LED 300 4000K /E/	1800.00 lm	18.00 W	100.00	625 mm	80 mm	310 mm	3.20 kg	1997018120
PRS/S ECO LED 1200x600 4000K /E/	7500.00 lm	70.00 W	107.00	1227 mm	85 mm	610 mm	9.00 kg	1997014200