

ZENITH LED 50 D120 B (EM) Ex

Explosion-proof Led-based luminaires



Description

ZENITH LED Ex iis intended for usage in hazardous areas of all classes of indoor and outdoor installations of oil, gas and petrochemical industry according to explosion protection marking.

Installation

Universal mounting bracket with angle adjustment capability; pipe mounting, hook mounting.

Design

Coper-free aluminium alloy housing. The Led-module, driver and screw terminals for power supply are mounted inside the housing. The luminaire can be made with emergency power supply unit. Mounting straps, hooks, fasteners are made of stainless steel. Optionally the luminaire can be supplied with wireless lighting control system DEUS ME-6.

Optical part

Flat or hemispherical diffuser are made of impact-resistant tempered borosilicate glass.

EX Mark

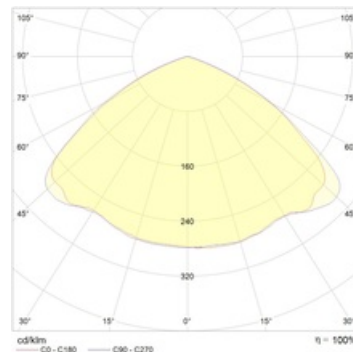
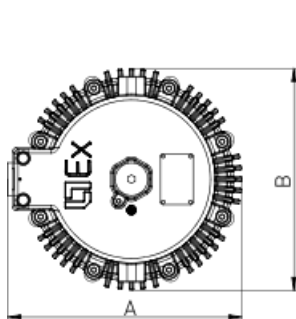
1 Ex d IIC T6 Gb/Ex tb IIIC Ta80°C Db - for 30, 50 W luminaires; 1 Ex d IIC T5 Gb/Ex tb IIIC Ta100°C D5 - for 70, 100 W luminaires.

Characteristics

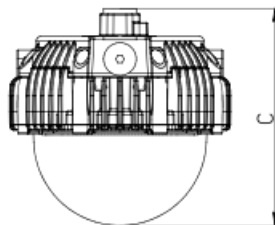
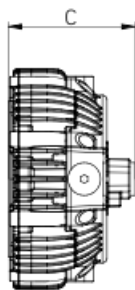
Explosion-proof protection according "flameproof enclosure "d", "dust ignition "t". Zones: gas explosion protection – 1, 2; dust explosion protection – 21, 22. Terminal: 3x2,5 mm2 (L+N+PE). Earthing: internal and external, M5. CRI: 80. Color temperature: 5000 K.



ZENITH LED D120



ZENITH LED D270



Dimensional characteristics

A	Length	325 mm
B	Width	250 mm
C	Height	155 mm
D	Length (mounting)	185 mm
E	Width (mounting)	59 mm
	Weight	7.4 kg

Technical features

1	Article no.	1226000090
2	Marking for gas	1 Ex d IIC T6 Gb
3	Dust marking	Ex tb IIIC T80 C Db
4	Mine gas coal dust marking	-
5	Light source	LED
6	Luminous flux	5350 lm
7	Power compatibility	47 W
8	Energy efficiency	114 lm/W
9	Color rendering index (CRI)	>75
10	Color temperature	5000 K
11	Power factor (cosFI)	> 0,99
12	Alternating/direct current (AC/DC)	No
13	Dimming	-
14	Rated voltage	230 V
15	Electrical shock protection	I
16	Climate application	Clim App1
17	Ambient temperature	-60 to +55 C
18	Housing color	Grey
19	Fire protection class	Ila
20	Flickering	<20%
21	Ingress protection (IP)	IP66
22	Mechanical shock protection	IK08/7 J
23	Energy efficiency class	A+
24	Inrush current	-
25	Emergency power supply unit	Yes
26	Beam angle	D120
27	Warranty	60 months