

WASHLINE LED 36 (30x55) 4000K 1000 /E/

Floodlights for complex-shaped facades



Description

WASHLINE LED is a series of professional architectural luminaires that designed for linear facade lighting. Efficient optics, adjustable bracket with a locking system, and a range of length and power levels make it possible to achieve flexibility, quality light, and efficiency in any lighting design.

Installation

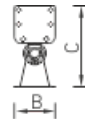
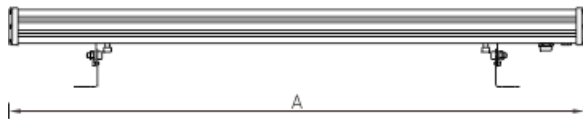
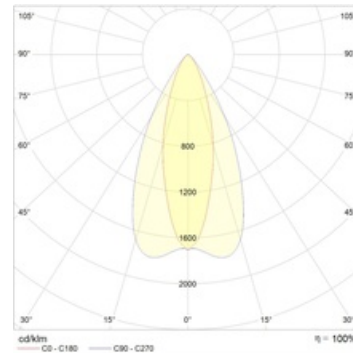
Luminaire shall be fixed at the surface.

Design

Housing is made of aluminum. The LED module is located inside the housing.

Optical part

Tempered glass diffuser. Beam angle: 15, 30, or 60 degrees. To be used as a floodlight for walls or architectural ensembles.



Dimensional characteristics

A	Length	1000 mm
B	Width	71 mm
C	Height	136 mm
	Weight	1.9 kg

Technical features

1	Article no.	1997024880
2	Light source	LED
3	Luminous flux	3200 lm
4	Power compatibility	41 W
5	Energy efficiency	78 lm/W
6	Color rendering index (CRI)	>70
7	Color temperature	4000 K
8	Power factor (cosFI)	> 0,90
9	Alternating/direct current (AC/DC)	No
10	Dimming	-
11	Rated voltage	230 V
12	Electrical shock protection	I
13	Electromagnetic compatibility (EMC)	Yes
14	Climate application	Clim App1
15	Ambient temperature	-40 to +40 C
16	Housing color	Grey
17	Fire protection class	I,II,III
18	Flickering	<25%
19	Ingress protection (IP)	IP65
20	Mechanical shock protection	IK08/6,5 J
21	Energy efficiency class	A
22	Inrush current	-
23	Inrush current impulse time	0 µs
24	Emergency power supply unit	No
25	Beam angle	D120
26	Warranty	60 months
27	Autonomy in emergency mode	-
28	Light flux in emergency mode	-