

VEGA S CUBE 105 SS 33

Surface-mounted luminaire

Description

Ceiling surface mounted luminaire creates diffused illumination. Suitable for wall mounting. Handmade diffuser made of blown three-layered opal glass. Ceiling cup made of metal painted in stainless steel – SS. Available versions IP20 and IP44.

Installation

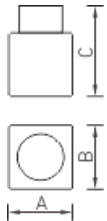
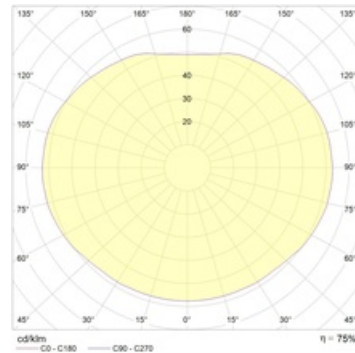
Mounted on a wall or ceiling.

Design

Hand-blown three-ply opal glass diffuser. Matte white painted metal mounting plate.

Optical part

Opal diffuser



Dimensional characteristics

A	Length	105 mm
B	Width	105 mm
C	Height	115 mm
	Weight	0.6 kg

Technical features

1	Article no.	1366000080
2	Light source	HL
3	Socle	G9
4	Number of Lamps	1
5	Power compatibility	33 W
6	Ballast	without EG
7	Dimming	-
8	Power factor (cosFI)	> 0,95
9	Alternating/direct current (AC/DC)	No
10	Rated voltage	230 V
11	Electrical shock protection	I
12	Electromagnetic compatibility (EMC)	No
13	Climate application	Clm App1
14	Ambient temperature	-40 to +40 C
15	Housing color	Metallic
16	Fire protection class	III
17	Flickering	<5%
18	Ingress protection (IP)	IP66
19	Mechanical shock protection	IK02/0,2 J
20	Energy efficiency class	E
21	Emergency power supply unit	No
22	Beam angle	-
23	Warranty	36 months