

TUBUS LED 2x18 (40) 3000K

Wall-mounted luminaire



Description

TUBUS LED - up-down type of luminaires for architectural lighting. Different types of optics, wattage and dimensions in this family make TUBUS LED universal solution for facade lighting.

Installation

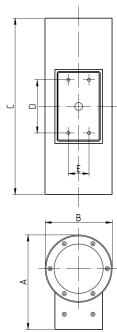
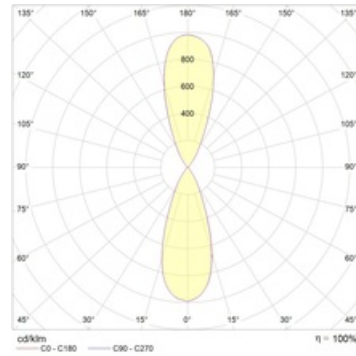
Mounted on a surface.

Design

Powder-painted die-cast aluminum housing. The LED module is located inside the housing.

Optical part

PC diffuser. For illumination of walls, facades, columns, walls and various architectural ensembles. LED type: SMD.



Dimensional characteristics

A	Length	182 mm
B	Width	130 mm
C	Height	340 mm
D	Length (mounting)	103 mm
E	Width (mounting)	40 mm
	Weight	4.8 kg

Technical features

1	Article no.	1637000410
2	Light source	LED
3	Luminous flux	3400 lm
4	Power compatibility	40 W
5	Energy efficiency	85 lm/W
6	Color rendering index (CRI)	>70
7	Color temperature	3000 K
8	Power factor (cosFI)	> 0,90
9	Alternating/direct current (AC/DC)	No
10	Dimming	-
11	Rated voltage	230 V
12	Electrical shock protection	I
13	Electromagnetic compatibility (EMC)	Yes
14	Climate application	Clm App1
15	Ambient temperature	-20 to +40 C
16	Housing color	Silver
17	Fire protection class	I,II,IIa,III
18	Flickering	<40%
19	Ingress protection (IP)	IP65
20	Mechanical shock protection	IK08/6,5 J
21	Energy efficiency class	A
22	Inrush current	-
23	Inrush current impulse time	0 µs
24	Emergency power supply unit	No
25	Beam angle	D40
26	Warranty	60 months
27	Autonomy in emergency mode	-
28	Light flux in emergency mode	-
29	Color of light	Белый