

## RUT 3 80 5000K

IP65 rated luminaires

### Description

Modular industrial luminaire. High degree of protection (IP65), high luminous flux. Thanks to modern LEDs with lenses used as the light source, this luminaire can be safely called the most energy efficient in the industrial lighting segment.

### Installation

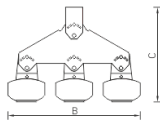
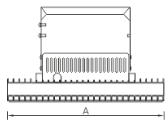
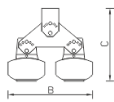
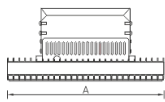
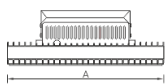
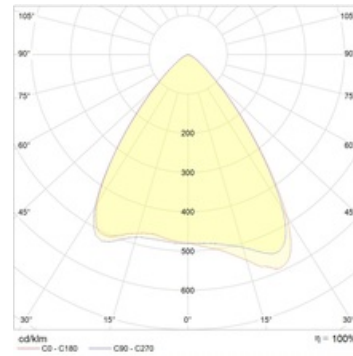
Mounted on the ceiling or wall surface using an U-bracket. Can be suspended.

### Design

Cast aluminum housing. LED modules with secondary optics and a driver are installed in the housing.

### Optical part

PMMA lenses. Three types of optics: 30, 64, and 100 degrees beam angle.



## Dimensional characteristics

A	Length	463 mm
B	Width	389 mm
C	Height	248 mm
D	Length (mounting)	180 mm
	Weight	11.5 kg

## Technical features

1	Article no.	1499000760
2	Marking for gas	-
3	Dust marking	-
4	Mine gas coal dust marking	-
5	Light source	LED
6	Luminous flux	25300 lm
7	Power compatibility	211 W
8	Energy efficiency	120 lm/W
9	Color rendering index (CRI)	>70
10	Color temperature	5000 K
11	Power factor (cosFI)	> 0,96
12	Alternating/direct current (AC/DC)	No
13	Dimming	-
14	Rated voltage	230 V
15	Electrical shock protection	II
16	Climate application	CIm App1
17	Ambient temperature	-40 to +45 C
18	Housing color	Metallic
19	Fire protection class	II
20	Flickering	<5%
21	Ingress protection (IP)	IP66
22	Mechanical shock protection	IK10/20 J
23	Energy efficiency class	A+
24	Inrush current	61,5 A
25	Emergency power supply unit	No
26	Beam angle	D80
27	Warranty	60 months