

RING LED 40 4000K /E/

Modular suspension system



Description

Modular LED-based lighting system in a traditional style that combines convenient installation, flexibility to create different system geometries, and comfortable glare-free light.

Installation

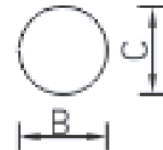
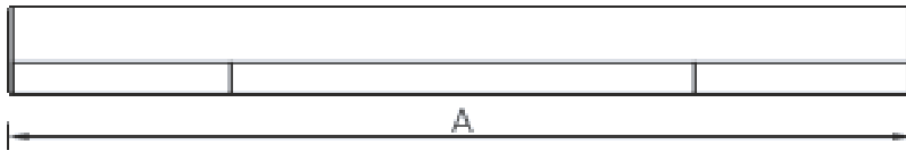
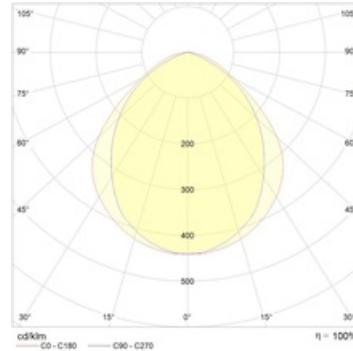
Suspended to a ceiling on steel wire ropes or mounted directly on the ceiling surface. The minimum required number of suspensions for an in-line arrangement is $n = N + 1$, where n is the number of suspensions, and N is the number of luminaires connected in-line. Closed circuit connecting nodes need one suspension per node.

Design

White powder-painted aluminum profile housing. End caps, connecting elements, suspension kits, and infeed kits are ordered separately.

Optical part

Profiled matte PMMA diffuser. LED type: SMD.



Dimensional characteristics

A	Length	2143 mm
B	Width	60 mm
C	Height	60 mm
	Weight	2.5 kg

Technical features

1	Article no.	1997018300
2	Light source	LED
3	Luminous flux	3600 lm
4	Power compatibility	41 W
5	Energy efficiency	88 lm/W
6	Color rendering index (CRI)	>80
7	Color temperature	4000 K
8	Power factor (cosFI)	> 0,95
9	Alternating/direct current (AC/DC)	Yes
10	Dimming	-
11	Rated voltage	230 V
12	Electrical shock protection	I
13	Electromagnetic compatibility (EMC)	Yes
14	Climate application	Clim App4
15	Ambient temperature	+5 to +35 C
16	Housing color	White
17	Fire protection class	-
18	Flickering	<5%
19	Ingress protection (IP)	IP20
20	Mechanical shock protection	IK02/0,2 J
21	Energy efficiency class	A
22	Inrush current	32 A
23	Inrush current impulse time	0 µs
24	Emergency power supply unit	No
25	Beam angle	D120
26	Warranty	60 months
27	Autonomy in emergency mode	-
28	Light flux in emergency mode	-