

OPL/S 436 HF

Luminaires with an opal diffuser

Description

Lamp-based luminaire designed for mounting on ceilings. Ideal for indoor spaces not equipped with Armstrong type suspended ceilings. Can be wall-mounted. The opal diffuser produces soft glare-free light, and the spring-loaded frame allows easy lamp replacement when necessary.

Installation

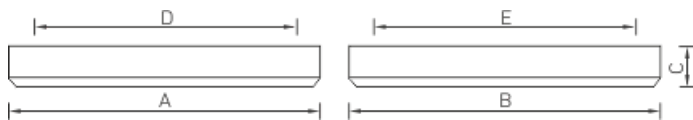
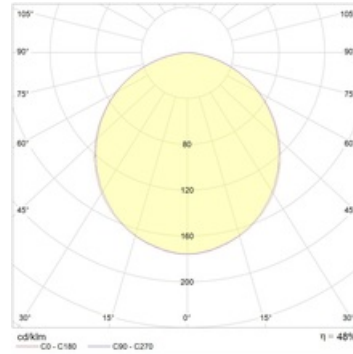
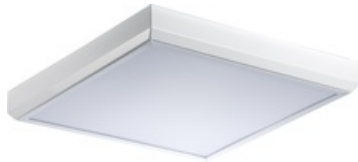
Mounted on the ceiling surface.

Design

White powder-painted weld sheet steel housing. Control gear is installed inside the housing.

Optical part

Opal PMMA diffuser in a metal frame. Secured in the housing with hidden plastic latches.



Dimensional characteristics

A	Length	1228 mm
B	Width	610 mm
C	Height	80 mm
D	Length (mounting)	1048 mm
E	Width (mounting)	508 mm
	Weight	8.5 kg

Technical features

1	Article no.	1057000340
2	Light source	FL
3	Socle	G13
4	Number of Lamps	4
5	Power compatibility	144 W
6	Ballast	ECG
7	Dimming	-
8	Power factor (cosFI)	> 0,96
9	Alternating/direct current (AC/DC)	No
10	Rated voltage	230 V
11	Electrical shock protection	I
12	Electromagnetic compatibility (EMC)	Yes
13	Climate application	CIm App4
14	Ambient temperature	+5 to +35 C
15	Housing color	White
16	Fire protection class	-
17	Flickering	<5%
18	Ingress protection (IP)	IP20
19	Mechanical shock protection	IK02/0,2 J
20	Energy efficiency class	A
21	Emergency power supply unit	No
22	Beam angle	-
23	Warranty	36 months