

C 360/118 HF ES1

Compact luminaires

Description

Round luminaires for mounting on ceiling/wall surface or indoors or under canopy. High ingress protection rating. Can be supplied with an emergency power unit, emergency pictograms, and a motion sensor

Installation

Mounted on ceiling surface indoors or under canopy

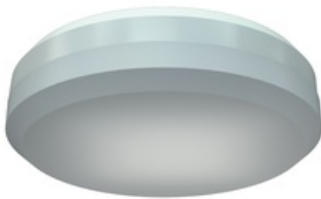
Design

Polyamide housing. The control gear mounted on a removable metal panel. Can be supplied with a built-in motion sensor. Order code for C360/132 MS: 1131001010.

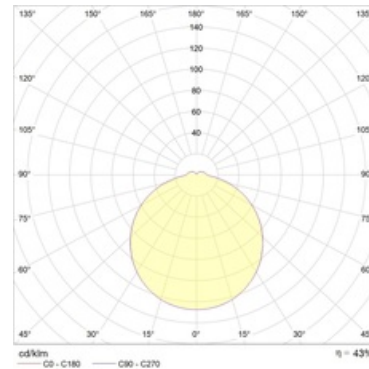
Optical part

Opal PMMA diffuser.

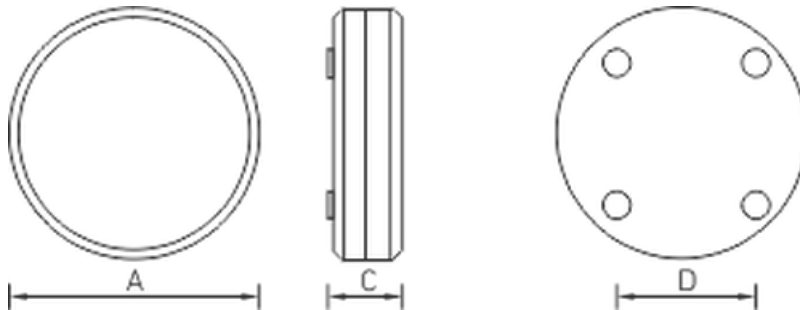
Product picture:



Light distribution:



Dimensions:



A	Diameter	360 mm
C	Height	83 mm
D	Diameter (mounting)	200 mm
Weight		3 kg

Technical features

1	Article no.	1131000030
2	Light source	CFL
3	Socle	2G11
4	Number of Lamps	1
5	Power compatibility	18 W
6	Ballast	ECG
7	Dimming	-
8	Power factor (cosFI)	> 0,96
9	Alternating/direct current (AC/DC)	No
10	Rated voltage	230 V
11	Electrical shock protection	I
12	Electromagnetic compatibility (EMC)	Yes
13	Climate application	CIm App2
14	Ambient temperature	0 to +40 C
15	Housing color	White
16	Fire protection class	-
17	Flickering	<5%
18	Ingress protection (IP)	IP54
19	Mechanical shock protection	IK02/0,2 J
20	Energy efficiency class	B...A+
21	Emergency power supply unit	Yes
22	Beam angle	-
23	Warranty	36 months